

Modifying the original ADB Svoboda © for GLEAMER compability

Introduction

The Gleamer is used for dimming 9 low voltage lamps, from 6 to 28V.

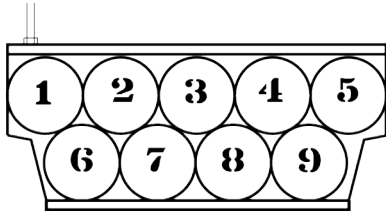
So, it's easy to control an *ADB Svoboda* © lamp by lamp, after modifying the cables.

This tutorial is showing the way to modify an existing Svoboda©, we recommend you to do it with the Chromlech Adaptator **SV106**.

ATTENTION !!!! This must be done by an electrical certified crew.

Modification of the Svoboda step by step

Lamps allocation numbering



Open the Svoboda ©



Svoboda © open

Unscrewing all lamp carefully



Removing lamps

Unswcrew nuts and screws which join reflectors.
Unswcrew all and keep them carefully aside



Unscrewing reflectors

Remove reflectors by pulling like this



Remove reflectors

Unswcrew original plate and keep screws and nuts



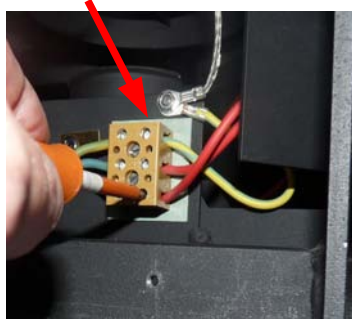
Original plate

CHROMLECH

19, avenue Gabriel Fauré - 35235 Thorigné-Fouillard - France
Tel : +33 (0)2 23 20 77 67 - Fax : +33 (0)2 23 20 75 71
e-mail : contact@chromlech.com - Web : www.chromlech.com

Unplug power, phase neutral and earth, and red cables which are connected to lamps. Only let earth cable on the right side (see drawing). Take the power cable out

Unscrew the terminals of each lamp, while retaining screws and washers



Uncabling

Original socket

Keep Screws

The svoboda is now ready to be updated



Screw and washer to keep

The SV106 adapter cable consists of 2 elements

The SV106 adapter cable consists of 2 elements



Internal adapters connecting sockets with new plate

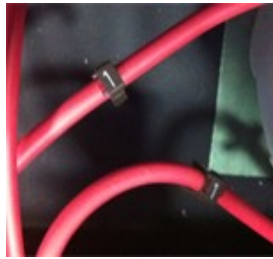
Serial plug

CHROMLECH

19, avenue Gabriel Fauré - 35235 Thorigné-Fouillard - France
Tel : +33 (0)2 23 20 77 67 - Fax : +33 (0)2 23 20 75 71
e-mail : contact@chromlech.com - Web : www.chromlech.com

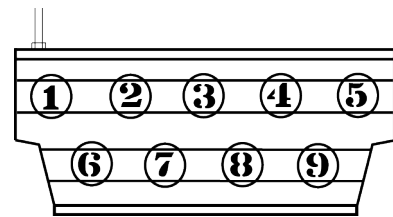
Follow internal cable numbering

Lamp	Colour
1	Brown
2	Red
3	Orange
4	Yellow
5	Green
6	Blue
7	Purple
8	Grey
9	White



Internal cable numbering

Wire the sockets according to the following numbering



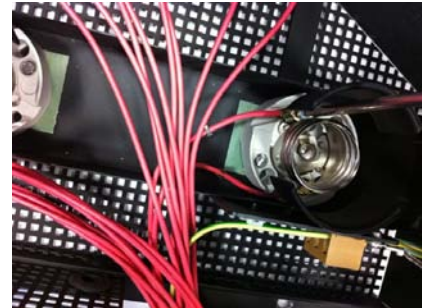
Sockets numbers

Route the cables as follows



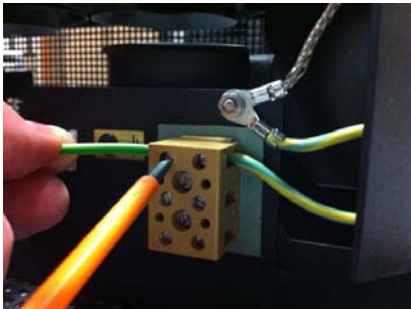
Cable routing (1 & 6 by the right side, others left side)

Re-use the original screws to attach the new terminals



Terminals attach

Connect the adaptor earth



Earth plug

Put the new plate instead of the original one



New plate

CHROMLECH

Replace reflectors



Press the support to facilitate the installation of reflectors

Place the reflector to be assembled in 4 points. Put the screws and nuts



Reflectors in place.

Put the screws, washers and nuts



Screws position (Re-use all for Ground contact !)

Reconnect the reflector No. 1 with cable original earth cable



Earth connection to reflectors

Replace lamps, then Close the Svoboda ©



In order to reuse Svoboda © traditional way with 9 Lamps in series, use serial plug comes with the kit SV106



Serial plug

CHROMLECH

19, avenue Gabriel Fauré - 35235 Thorigné-Fouillard - France
Tel : +33 (0)2 23 20 77 67 - Fax : +33 (0)2 23 20 75 71
e-mail : contact@chromlech.com - Web : www.chromlech.com