



**Born from the meeting of integrated electronics and traditional lighting,  
JARAG-5 opens a new space of luminous creativity.**

**Multi-beam, completely integrated, programmable at will, it makes  
lighting power even more accessible.**



### Traditional

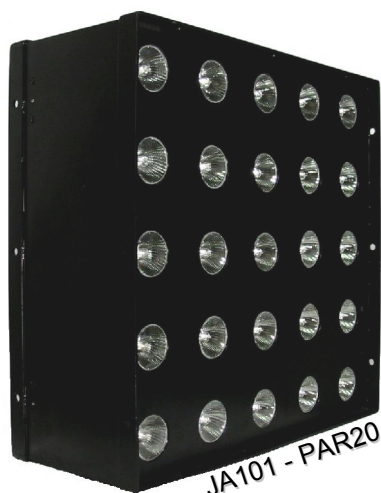
Using traditional halogen lamps, JARAG offers a color pallet going from amber to white. Easy to carry and robust, it interfaces itself directly with conventional consoles.

### Powerful

With 25 independent lamps, and over 1800W power, every user finds his style. Multiple JARAG installation is possible to create effects such as walls of lights.

### Innovating

Capacity to control independently each lamp allows new and varied light renderings. Everything becomes possible : representation of grid like patterns and effects, use of alphabetical letters, and especially creation of animated sequences.



### Simple

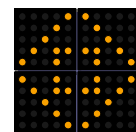
Fully integrated electronic card inside the device enables instantaneous implementation. No additional dimmer needed only one direct power supply and DMX line are sufficient.

### Subtle

Integrated numerical control allows a precise proportioning for each lamp, in light intensity and transitional speed. From stroboscopic effects to soft amber variations, every thing comes true by a finger move.

### Evolved

Patterns definition, as their animation can be freely programmed and downloaded into the projector, then be restored instantaneously and accurately. The integrated sequencer permits to control the unit with only 6 channels.



## Technical data

### Power supply

Integrated dimmers  
230V / 50Hz / 8A / 1875 W

### Lamps

25 lamps 220V, 75W  
JA101 : Hi-Spot ES63 type, 25°  
2800°K, 2500h, GU10, réflect. alu  
JA201 : Hi-Spot ES95 type, 10° or 30°  
2900°K, 3000h, E27, réflect. alu

### Frame

Black Epoxy finish checkmate  
Dimens. JA101 (HxLxP) 58 x 58 x 24 cm  
Dimens. JA201 (HxLxP) 58 x 58 x 27 cm  
Weight (w/out lamps) = 18 kg / 20 kg

### Rigging

With adjustable yoke and/or frame's rigging point.

### Assembly

JARAG can be juxtaposed and assembled between one another by preserving one constant lamp's grid spacing.

### Connectors

Line cord (fitted with 16A european plug)  
DMX in (XLR5), DMX out (XLR5)  
RS232-C link (SUBD9)

### Sequencer

Integrated sequencer, containing 256 sequences of 32 steps. DMX controlled sequencer.

128 sequences (8 banks of 16) factory programmed, 128 others sequences are available for user.

### DMX control - 6 channels (sequence)

Channel 1 - Sequence intensity  
Channel 2 - Sequence speed  
Channel 3 - Effects (\*)  
Channel 4 - Rotation, symmetry H / V  
Channel 5 - Sequence selection  
Channel 6 - Bank selection  
(\*) variable cross-fader, TBT effect (low voltage lamp emulation)

### DMX control - 25 channels (matrix)

Channel 1 to 25 - Dimmer lamp 1 to 25 (25 independant circuits)

### DMX control - 31 channels (dual)

HTP combination ("Highest Takes Precedence") over both 6-channel (sequence) and 25-channel (matrix) modes.

Channel 1 to 6 - Sequence control  
Channel 7 to 31 - Matrix control

### Manual settings

Digital control panel on rear face, with four keys and a screen display. Available controls : DMX address, DMX mode, lamp testing, correction of projector orientation, sequence activation, configuration reset.

### PC control (RS232-C)

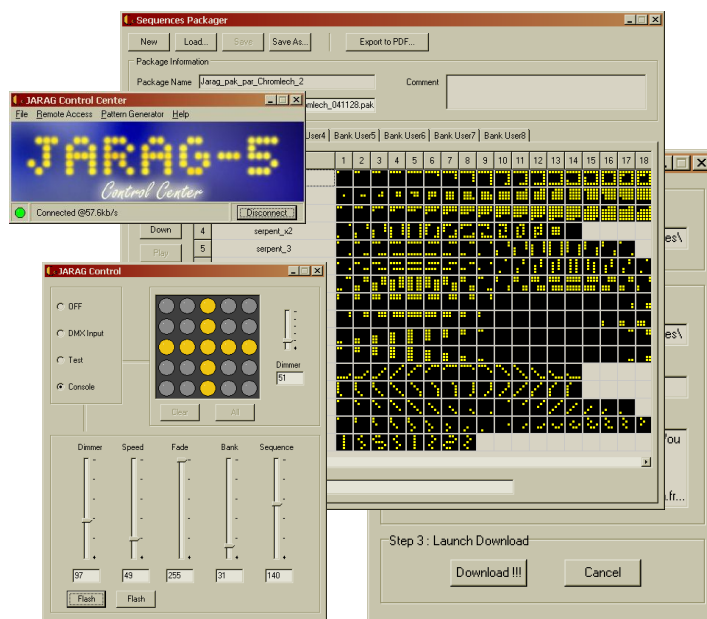
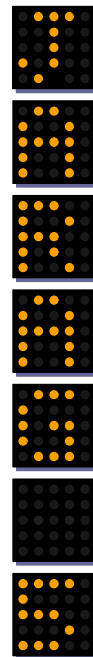
User sequence downloading and saving, along with parameter setting and projector control, are available from a remote PC through a serial link and a control software.

### Control software

Allow pattern and sequence creation, encoding and simulation, without projector connection. Carry out remote sequence loading and safeguard in projector itself. Ensure controlling and parameter setting with the built-in console and control panel.

A PC (Win2K/XP) with one RS232C port for the connection with JARAG is required.

This software can be downloaded from our website.



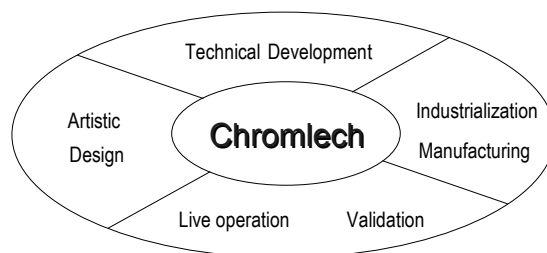
## References

- JA101 Jarag-5 (for PAR20 / GU10 lamps)
- JA102 Set of 25 PAR20 lamps (25°) for JA101
- JA103 Yoke for JA101
- JA104 Flight-case (for 2x JA101)
- JA201 Jarag-5 (for PAR30 / E27 lamps)
- JA202 Set of 25 PAR30 lamps (10°) for JA201
- JA203 Yoke for JA201
- JA204 Flight-case (for 2x JA201)
- JA105 Software for sequence programming (all models)

Chromlech is a company founded in 2004 by light designers and engineers. Its vocation is conceiving innovative light systems for the entertainment and convention businesses.

Established in Rennes, Brittany, Chromlech gathers competences necessary to the development of new products, created, developed, industrialized and validated by a team of engineers and light technicians and designers.

Chromlech results from "cromlech", Celtic name given to megalithic monuments composed of stones laid out in circles, and aligned with stars. These cromlechs illustrate our values well : robustness and perennial, orientation on the light, and their multiple application, which are not all yet known...



Find out more on  
[www.chromlech.com](http://www.chromlech.com)  
or contact us at  
[contact@chromlech.com](mailto:contact@chromlech.com)



Limited liability company with a capital of 10.000 €  
80, avenue des Buttes de Coësmes - Bât. Gallium - 35700 RENNES  
Phone : +33 (0)2.23.20.77.67 - Fax : +33 (0)2.23.20.75.71  
RCS RENNES 477 912 984